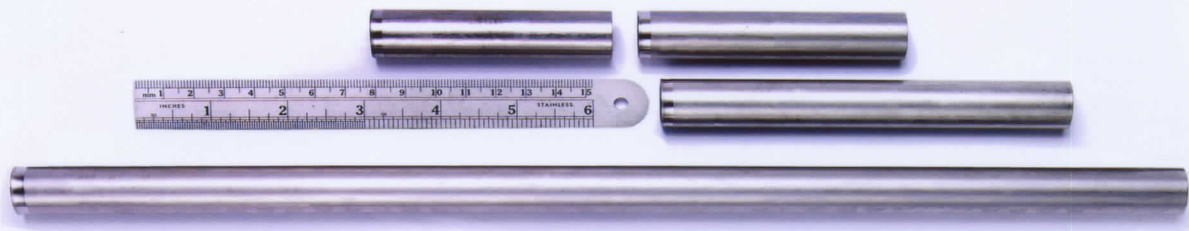


# Like a toothpick dispenser...



...these steel Tubes (18.5mm diameter X 75-140mm long; one length at-a-time)  
are fed to an end cap weld operation.

Parts are manually loaded, end selected, into the top of the storage bin.

Shorter than six inch parts are loaded through a side access door.

An adjustable wall in the bin accommodates the range of part lengths.

Storage is 900 pieces for a 0.5 hour run time.

Gently agitated parts flow from the bin into a single path track to discharge rolling, at 30 pieces per minute.

**Efficient, Quiet and Gentle to the pre-machined ends.**



Call: (734) 522-2160 Fax: (734) 522-4671

E-mail: [sales@spectrumautomation.com](mailto:sales@spectrumautomation.com) or drop in!

34447 Schoolcraft Road Livonia, MI. 48150

[www.SpectrumAutomation.com](http://www.SpectrumAutomation.com)